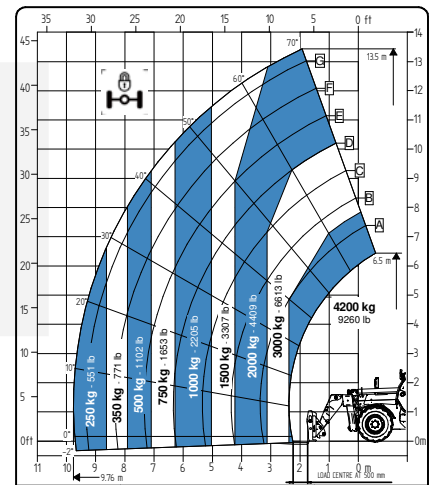
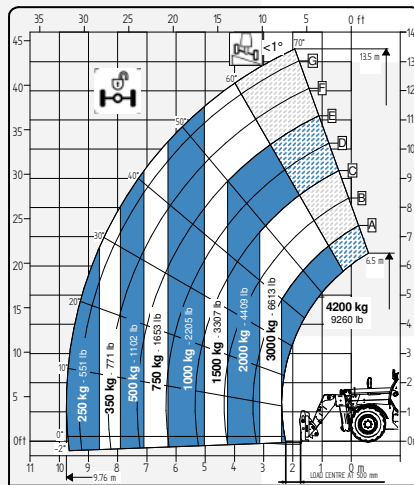
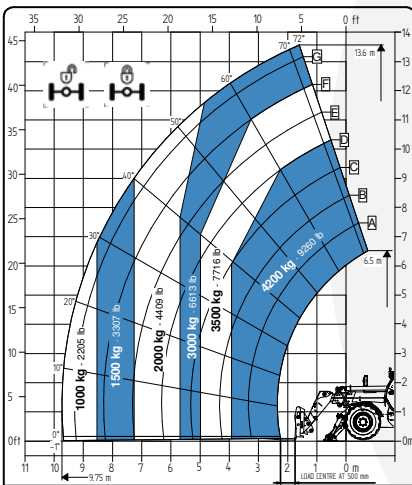


FT-9345E FULL ELECTRIC



Faresin USA would like to bring to the attention of all potential customers, recipients, and, to the fullest extent possible, external stakeholders, that Faresin Industries S.p.A. has adopted a general disclaimer. This disclaimer pertains to the description of the technical and functional characteristics of its machinery, as well as the methods of their use, including safety considerations. This disclaimer is of a general nature, and Faresin Industries S.p.A. encourages you to review it, which can be accessed through the website: www.faresinindustries.com.




FARESINUSA.COM

877-327-3746

FT-9345E FULL ELECTRIC

TECHNICAL FEATURES
























MODELS		FT-9345E
DIMENSIONS		
Height	ft	8.2
Width	ft	7.6
Length	ft	20.8
Cabin width	ft	3.1
WEIGHT		
Weight	lbs	25,243
DETAILS		
Number of extracting sections	nr	2
Max capacity	lbs	9,259
Max lifting height	ft	44.6
Max horizontal boom extension	ft	31.9
Boom extension at max height	ft	5.2
Swinging Angle	°	144
TANK CAPACITY		
Hydraulic oil tank	gal	39.6
CONNECTION FOR EQUIPMENT		
FH		●
TYRES		
405/70 20		●
405/70 24		○
445/65 R22.5		○
Turning radius	ft	13.1
BATTERIES AND CHARGERS		
Battery		435V (105 Ah)
Charging type	v	220 - 380 

NOTE: All dimensions defined on model with wheels 405/70 20

CONFIGURATIONS		FULL ELECTRIC
TRANSMISSION		
Transmission		electric
Speed	mph	15.5
MOTOR		
Transmission	kW	51 (S1)
Hydraulic services	kW	23 (S1)
HYDRAULIC		
Pump type		gears pump
Hydraulic capacity	gal/psi	31.7/3,626
Distribution		flow sharing
OTHER		
Joystick		hydraulic-electro proportional
Cabin		Queen Cab
Quick coupling		○
Front and rear LED lights		○
Floating boom		○
Boom suspension		○
Manual 6-way diverter		○
PEB (Boom Electric Socket)		○
Front constant flow		○
Bucket mode		●
SPECIAL FEATURES		
Air conditioning		○
Forward buzzer avas		○
Farmatics		FULL (2-5 years)

● Standard ○ Optional - Not available

POWER AND BATTERY CAPACITY	45 kW/h (105 Ah)
AUTONOMY STANDARD CYCLE INTENSIVE (eco mode)	UP TO 3,5 HOURS
AUTONOMY STANDARD CYCLE NOT INTENSIVE (eco mode)	UP TO 8 HOURS

CHARGERS		
STANDARD ON BOARD MONO PHASE CHARGER 11 KW	20-80%	5 h
POWER INPUT  32 A  220 VAC		
POWER OUTPUT  14 A  435 VDC	0-100%	8 h
STANDARD THREE-PHASE CHARGER ON BOARD 11 KW	20-80%	3 h
POWER INPUT  16/32 A  400 VAC		
POWER OUTPUT  22 A  435 VDC	0-100%	5 h 30 m
OPTIONAL SINGLE-PHASE CHARGER ON BOARD 22 KW	20-80%	12 h
POWER INPUT  16 A  220 VAC		
POWER OUTPUT  4 A  435 VDC	0-100%	27 h
OPTIONAL THREE-PHASE 16A CHARGER ON BOARD 22 KW	20-80%	3 h
POWER INPUT  16 A  400 VAC		
POWER OUTPUT  22 A  435 VDC	0-100%	5 h 30 m
OPTIONAL THREE-PHASE 32A CHARGER ON BOARD 22 KW	20-80%	2 h
POWER INPUT  32 A  400 VAC		
POWER OUTPUT  37 A  435 VDC	0-100%	3 h 30 m
50KW DC CHARGING STATION	20-80%	1 h 30 m
POWER INPUT  50 Kw		
POWER OUTPUT  50 A (variables)	0-100%	2 h 30 m