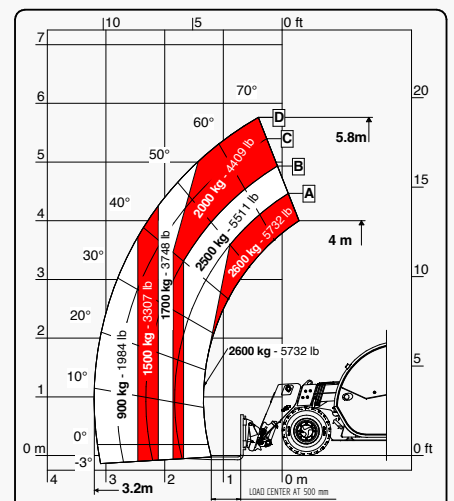
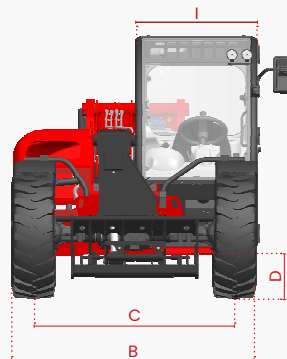
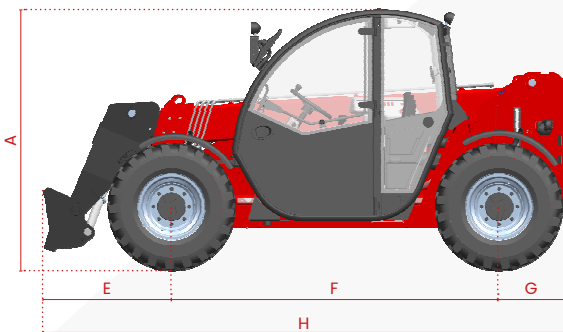


FT-5719 SMALL RANGE



Faresin USA would like to bring to the attention of all potential customers, recipients, and, to the fullest extent possible, external stakeholders, that Faresin Industries S.p.A. has adopted a general disclaimer. This disclaimer pertains to the description of the technical and functional characteristics of its machinery, as well as the methods of their use, including safety considerations. This disclaimer is of a general nature, and Faresin Industries S.p.A. encourages you to review it, which can be accessed through the website: www.faresindustries.com.



FARESINUSA.COM

877-327-3746

FT-5719 SMALL RANGE

TECHNICAL FEATURES

MODELS		FT-5719
DIMENSIONS		
[A] Height	ft	6.3
[B] Width	ft	6.2
[C] Gauge	ft	5
[D] Ground clearance	ft	8.6
[E] Front overhang	ft	3.2
[F] Pitch	ft	8.2
[G] Rear overhang	ft	1.7
[H] Length without tow hitch	ft	13.2
[I] Cabin width	ft	3.1
WEIGHT		
Classic 52	lbs	10,361
DETAILS		
Number of extracting sections	nr	1
Max capacity	lbs	5,732
Max lifting height	ft	19.3
Max horizontal boom extension	ft	10.4
Boom extension at max height	ft	1
Swinging Angle	°	155
TANK CAPACITY		
Hydraulic oil tank	gal	21.1
Diesel tank	gal	18.4
CONNECTION FOR EQUIPMENT		
FH		●
EURO		○

NOTE: All dimensions defined on model with wheels 12-16,5

● Standard ○ Optional - Not available



CONFIGURATION		CLASSIC 52
TRANSMISSION		
Hydrostatic		single gear
Speed	mph	18.6
ENGINE TIER 4 FINAL		
Builder		Yanmar
Power	kw/hp	51,7/69,3
Aftertreatment system		DOC + DPF
Drawbar pull	daN	3530
HYDRAULIC		
Pump type		gears pump
Hydraulic capacity	gal/psi	21.1/3,335
TYRES		
12-16,5		●
12,5-18		○
435/50 19.5		○
Turning radius	ft	10.7
OTHER		
Joystick		mechanical-electro proportional
Quick coupling		○
Electro-proportional double acting rear hydraulic connection		○
Front and rear LED lights		○
Rear trailer lights socket		○
6 t fixed tow hook		○
Engine water pre-heating		○
Air conditioning		○
Floating boom		○
Boom suspension		○
Manual 6-way diverter		○
PEB (Boom Electric Socket)		○
Creeper		○
Front constant flow		○
Bucket mode		●

